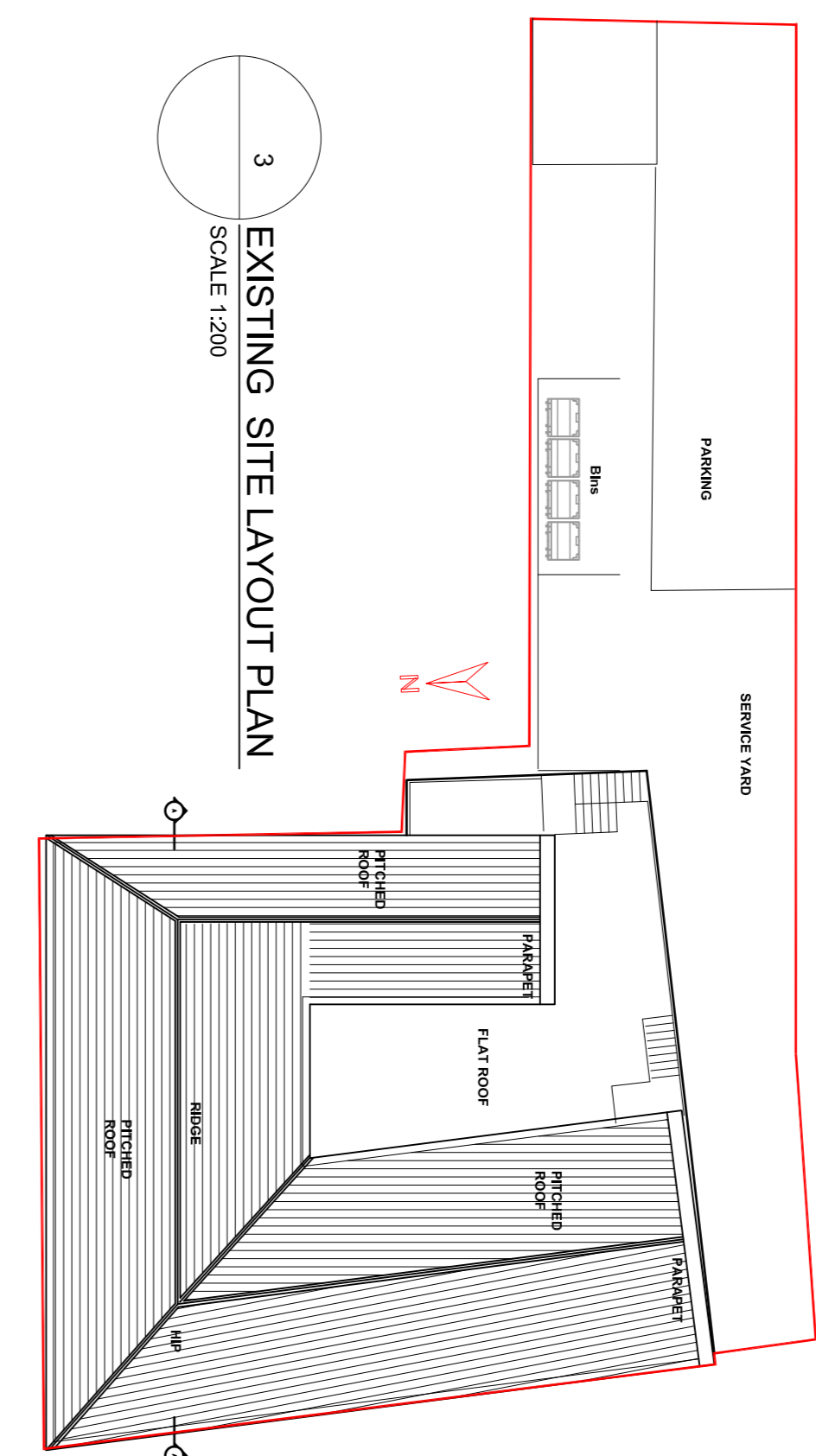
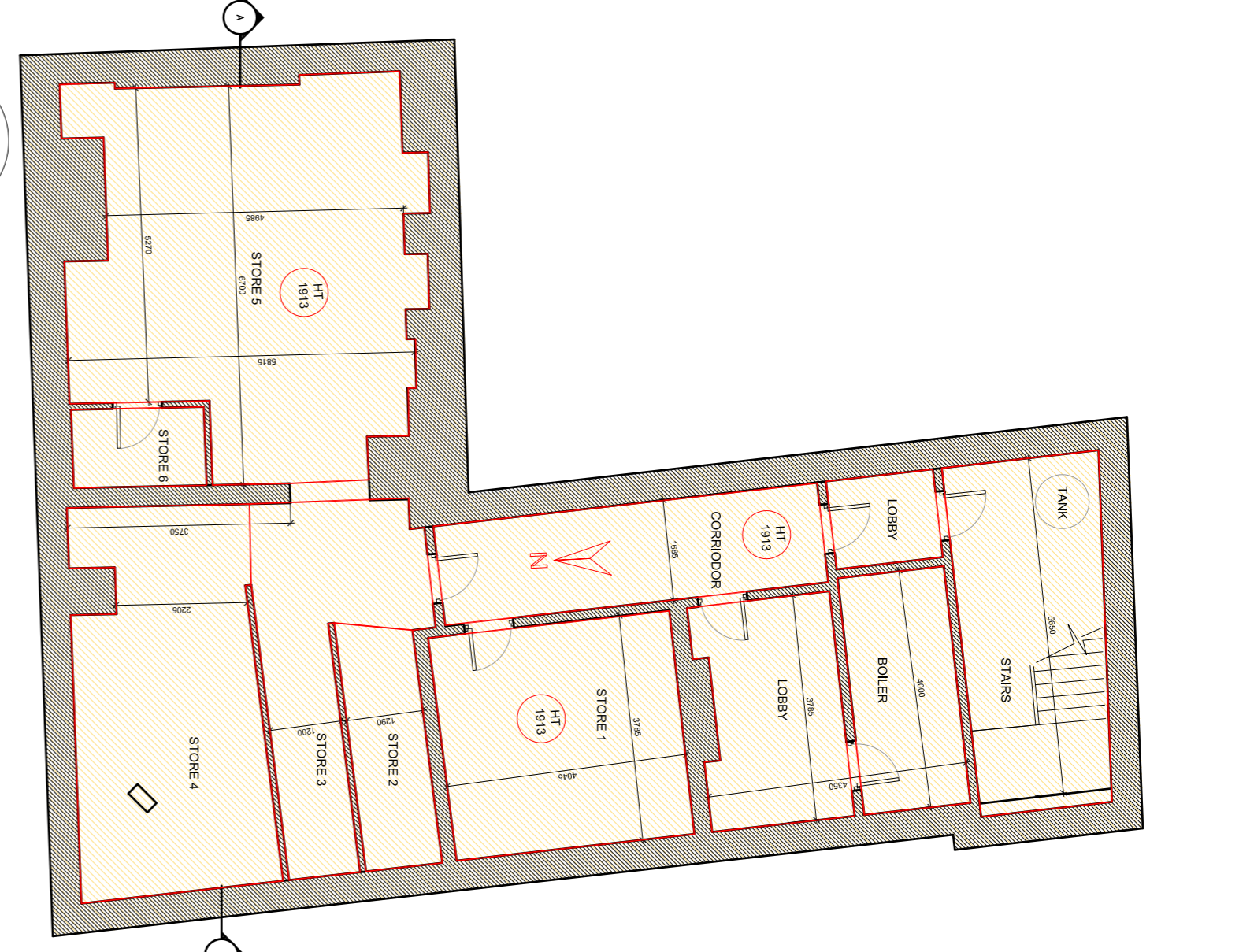


INTERNAL FLOOR AREA SCHEDULE	sq. M	GROSS FLOOR AREA SCHEDULE	sq. M
SITE AREA	608 sqm	BASEMENT FLOOR AREA	180.2 sqm
BASEMENT FLOOR AREA	142 sqm	GROUND FLOOR AREA	384.4 sqm
GROUND FLOOR AREA	306 sqm	FIRST FLOOR AREA	265.2 sqm
FIRST FLOOR AREA	271 sqm	HALF LANDING FLOOR AREA	17.7 sqm
HALF LANDING FLOOR AREA	17.7 sqm	SECOND FLOOR AREA	240 sqm
SECOND FLOOR AREA	240 sqm	TOTAL FLOOR AREA	926.7 sqm
TOTAL FLOOR AREA	926.7 sqm		

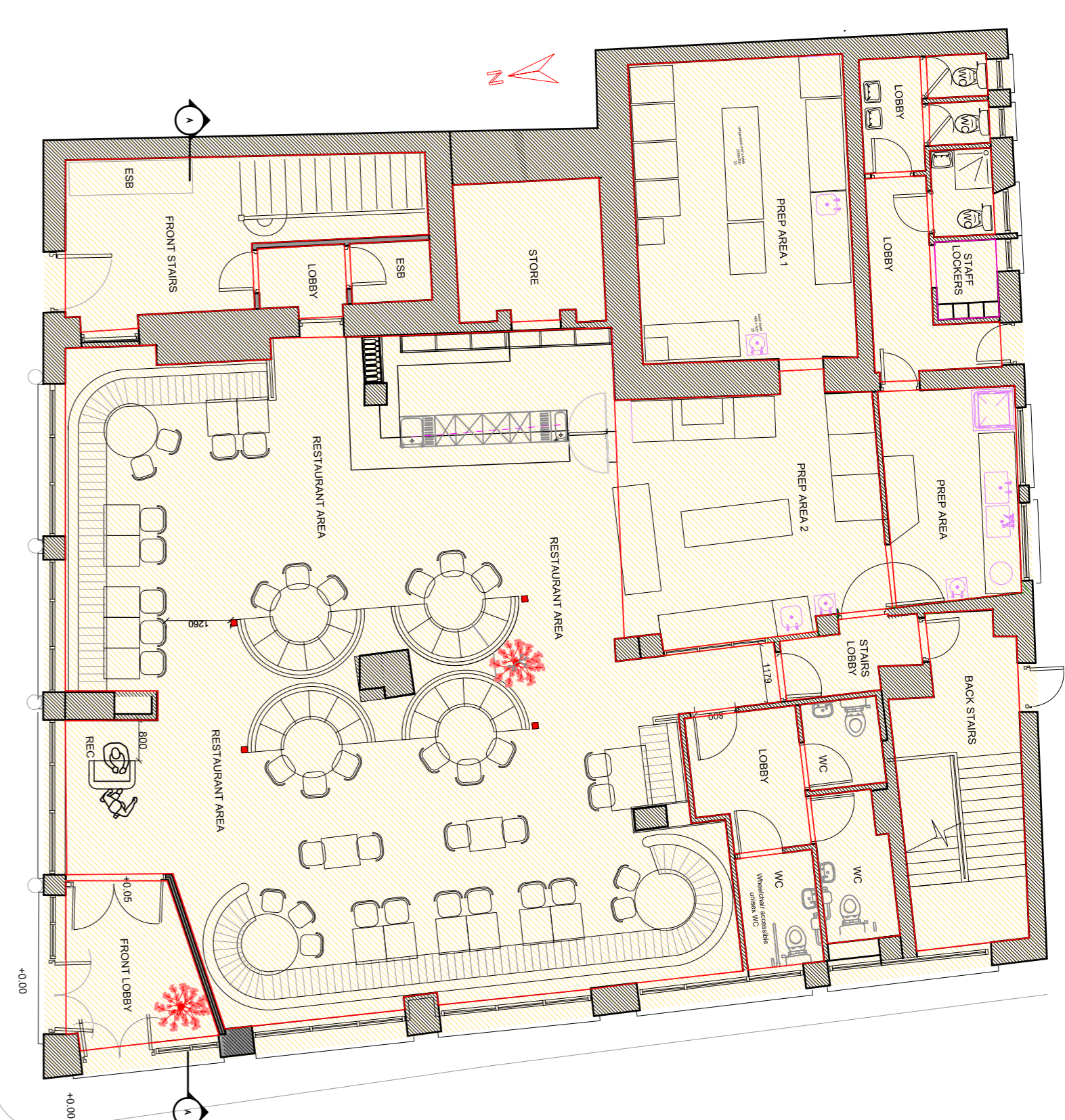
INTERNAL FLOOR AREA SCHEDULE	sq. M	GROSS FLOOR AREA SCHEDULE	sq. M
SITE AREA	608 sqm	BASEMENT FLOOR AREA	180.2 sqm
BASEMENT FLOOR AREA	142 sqm	GROUND FLOOR AREA	384.4 sqm
GROUND FLOOR AREA	306 sqm	FIRST FLOOR AREA	265.2 sqm
FIRST FLOOR AREA	271 sqm	HALF LANDING FLOOR AREA	17.7 sqm
HALF LANDING FLOOR AREA	17.7 sqm	SECOND FLOOR AREA	240 sqm
SECOND FLOOR AREA	240 sqm	TOTAL FLOOR AREA	926.7 sqm
TOTAL FLOOR AREA	926.7 sqm		



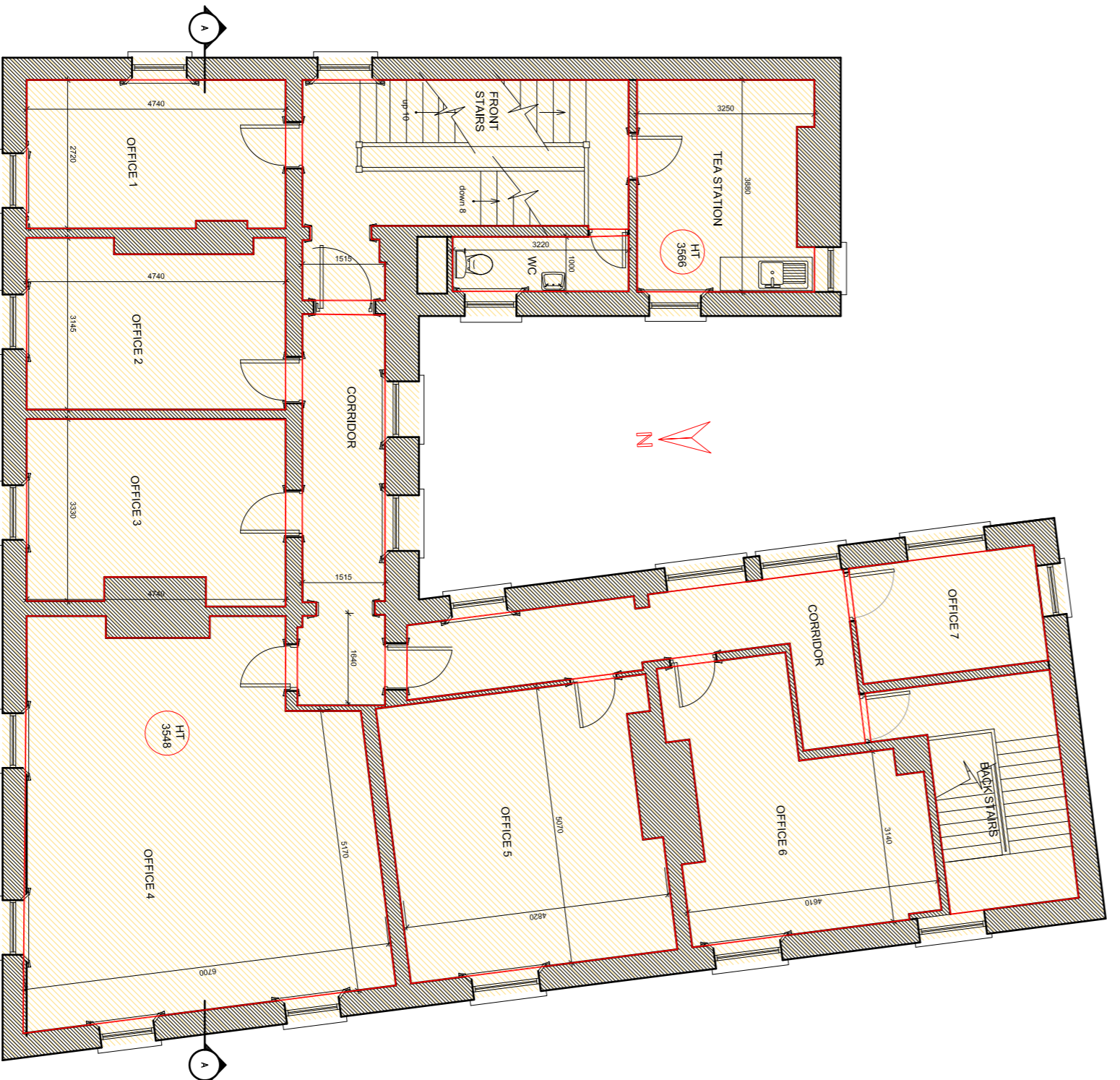
3 EXISTING SITE LAYOUT PLAN
SCALE 1:200



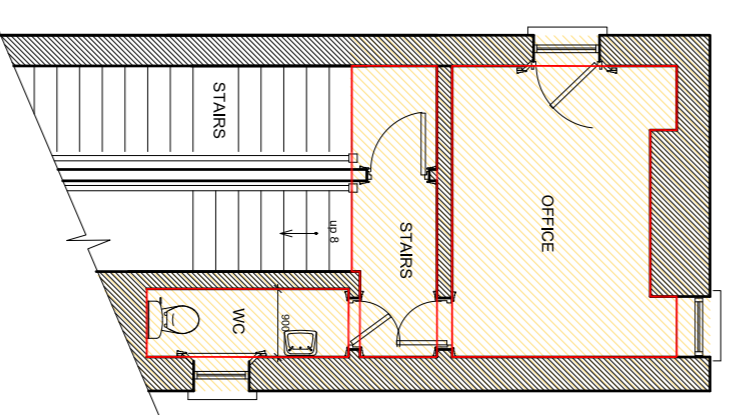
1 EXISTING LOWER GROUND FLOOR PLAN
SCALE 1:100



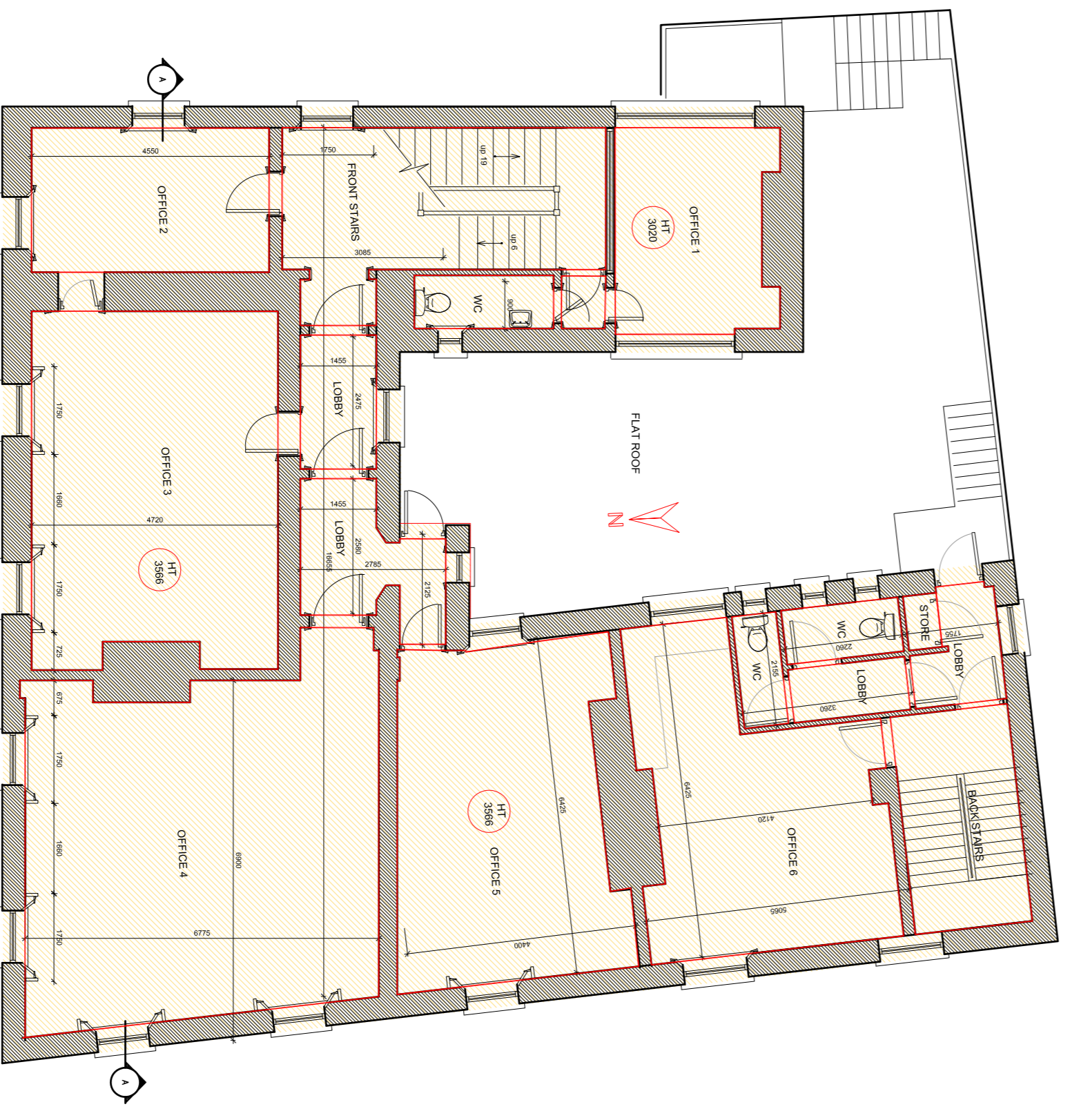
2 EXISTING GROUND FLOOR PLAN
SCALE 1:100



6 EXISTING SECOND FLOOR PLAN
SCALE 1:100



5 EXISTING HALF LANDING FLOOR PLAN
SCALE 1:100



4 EXISTING FIRST FLOOR PLAN
SCALE 1:100

LOCATION	ROOM AREA	TOTAL AREA	
STAIRS	14.3 sqm	131 sqm	
LOBBY	22.6 sqm		
CORRIDOR	10.9 sqm	306 sqm	
BOILER	7.1 sqm		
STORE 1	15.8 sqm		
STORE 2	5.4 sqm		
STORE 3	10.8 sqm		
STORE 4	19.5 sqm		
STORE 5	33.9 sqm	131 sqm	
STORE 6	2.8 sqm		
BASEMENT AREA		142 sqm	
GROUND FLOOR (FLOOR AREA)			
INTERNAL ROOM AREA (Including walls)		306 sqm	
INTERNAL ROOM AREA (Excluding walls)			
LOCATION	ROOM AREA	TOTAL AREA	
FRONT STAIRS	17.3 sqm	221 sqm	
LOBBY	2.2 sqm		
STORE	7.8 sqm	290 sqm	
RESTAURANT	47.3 sqm		
FRONT LOBBY	8.0 sqm		
TOILET LOBBY	5.4 sqm		
WC	3.3 sqm		
WC	3.9 sqm		
WC	2.5 sqm		
PREP 1	24.7 sqm		
PREP 2	24.8 sqm		
PREP AREA	10.4 sqm		
LOBBY	5.6 sqm		
STAFF LOOKERS	1.7 sqm		
WC	2.3 sqm		
WC	4.0 sqm		
WC	1.0 sqm		
LOBBY	2.6 sqm		
BACK STAIRS LOBBY	3.1 sqm		
BACK STAIRS	14.1 sqm		
GROUND FLOOR AREA		290 sqm	
FIRST FLOOR (FLOOR AREA)			
INTERNAL ROOM AREA (Including walls)		221 sqm	
INTERNAL ROOM AREA (Excluding walls)			
LOCATION	ROOM AREA	TOTAL AREA	
FRONT STAIRS	17.9 sqm	201.4 sqm	
LOBBY	1.0 sqm		
OFFICE 1	2.6 sqm		
OFFICE 2	11.8 sqm		
OFFICE 3	12.5 sqm		
OFFICE 4	31.3 sqm		
LOBBY	3.2 sqm		
OFFICE 5	44.4 sqm	200.8 sqm	
OFFICE 6	26.4 sqm		
OFFICE 7	23.7 sqm		
BACK STAIRS	9.5 sqm		
BACK STAIRS LOBBY	3.0 sqm		
STORE	0.6 sqm		
LOBBY	2.3 sqm		
WC	2.3 sqm		
WC	1.8 sqm		
FIRST FLOOR AREA			201.4 sqm
HALF LANDING (FLOOR AREA)			
INTERNAL ROOM AREA (Including walls)			18.0 sqm
INTERNAL ROOM AREA (Excluding walls)			
LOCATION	ROOM AREA	TOTAL AREA	
FRONT STAIRS	4.2 sqm	17.0 sqm	
WC	2.3 sqm		
OFFICE	10.5 sqm	240 sqm	
INTERNAL ROOM AREA (Including walls)			
INTERNAL ROOM AREA (Excluding walls)			
LOCATION	ROOM AREA	TOTAL AREA	
TEA STATION	11.8 sqm	240 sqm	
WC	3.0 sqm		
FRONT STAIRS	18.2 sqm		
CORRIDOR	10.8 sqm		
OFFICE 1	12.7 sqm		
OFFICE 2	14.0 sqm		
OFFICE 3	15.1 sqm		
OFFICE 4	42.7 sqm		
OFFICE 5	24.1 sqm	108.8 sqm	
OFFICE 6	17.3 sqm		
OFFICE 7	12.8 sqm		
OFFICE 8	7.2 sqm		
BACK STAIRS	10.8 sqm		
SECOND FLOOR AREA			200.8 sqm
OVERALL SECOND FLOOR AREA			

AS BUILT

Client: Kenneth James Wiley

Project: THE OLD BANK PHIBSBOROUGH ROAD

Architects: R.C. Design Services Ltd.

Engineers: PROJECT MANAGERS

www.rcdesignservices.com

Copyright and ownership of this drawing belongs to R.C. Design Services Ltd. unless otherwise consent is required from R.C. Design Services Ltd. All dimensions to be checked on the field to Architect to be informed of any discrepancies.

Notes:

- Work only to approved dimensions.
- All dimensions to be checked on the field to Architect to be informed of any discrepancies.

Rev. Date Description By: chd. Rev. Date Description By: chd.